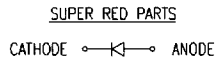
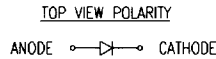
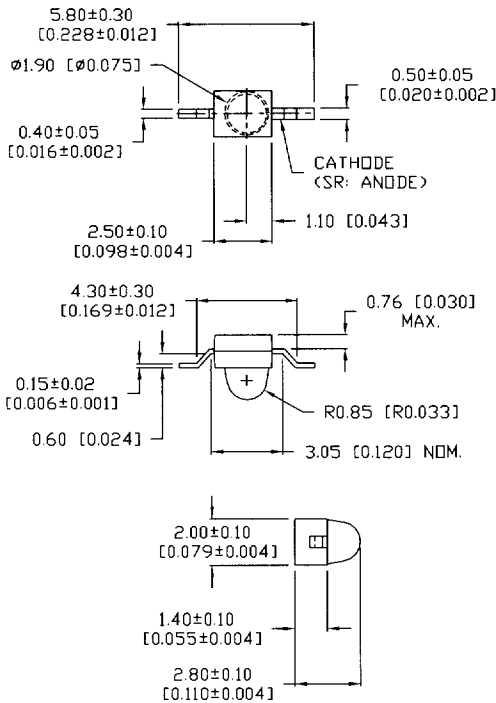
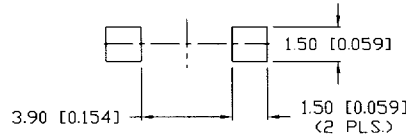


SSL-LXA228XC-TR31
• Transfer Molded • Z-Bend Axial Leads

RECOMMENDED SOLDER PAD LAYOUT

Features/Options

- Epoxy Lead Frame, Molded Axial Package
- Lead Frame Soldering Reliability
- State-of-the-Art LED Die
- Built-In Round or Flat Lenses
- Trimmed and Formed Leads

Applications/Uses

- Keyboard/Keypad Illumination
- Circuit Fault Indicators
- Position Indicators
- Display or Character Backlighting
- Control Board Indicators
- Medical Diagnostic Instruments

SSL-LXA228 Package Style - Super Bright
• Transfer Molded • Z-Bend Axial Leads

Lumex Part Number	LED Die Composition	Emitted Color	Peak Wavelength	Lens Color	Axial Intensity $I_f = 20\text{mA}$	V_f Typ @ $I_f = 20\text{mA}$	V_f Max @ $I_f = 20\text{mA}$	View Angle	Reflow Profile p.69	Reel Size	Tape Spec p.69
SSL-LXA228SIC-TR31	AlInGaP	Super Intensity Red	636	Clear	800	2	2.6	30 degrees	Fig 1	1000	Fig B
SSL-LXA228SOC-TR31	AlInGaP	Super Orange	610	Clear	1300	2	2.6	30 degrees	Fig 1	1000	Fig B
SSL-LXA228SUGC-TR31	AlInGaP	Super Ultra Green	574	Clear	400	2.2	2.6	30 degrees	Fig 1	1000	Fig B
SSL-LXA228SRC-TR31	GaAlAs	Super Red	660	Clear	700	1.8	2.3	30 degrees	Fig 1	1000	Fig B
SSL-LXA228SYC-TR31	AlInGaP	Super Yellow	590	Clear	700	2	2.6	30 degrees	Fig 1	1000	Fig B

SSL-LXA228 Package Style - Ultra Bright
• Transfer Molded • Z-Bend Axial Leads

Lumex Part Number	LED Die Composition	Emitted Color	Peak Wavelength	Lens Color	Axial Intensity $I_f = 20\text{mA}$	V_f Typ @ $I_f = 20\text{mA}$	V_f Max @ $I_f = 20\text{mA}$	View Angle	Reflow Profile p.69	Reel Size	Tape Spec p.69
SSL-LXA228USBC-TR31	InGaN/SiC	Ultra Super Blue	470	Clear	250	3.5	4.2	30 degrees	Fig 1	1000	Fig B